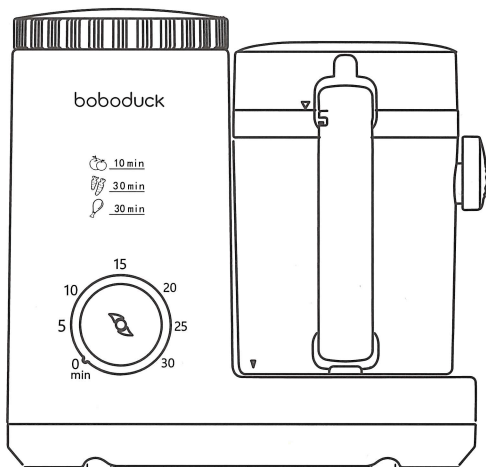


User Manual

Baby Food Processor

bobo
duck



Model No.: F9005

Important Safety Instructions

- Do not place near fire sources.
- Keep the appliance and its cable out of the reach of children
Do not allow the power cord and plug to come into contact with hot surfaces and sharp corners.
- Do not let children play with the product packaging bag to avoid the hazard of suffocation.
- If the product power adapter is damaged, in order to avoid danger, it must be replaced by the manufacturer, its maintenance department or professionals in the similar department.
- Do not use this unit as a crusher.
- Do not process hard food on this machine.
- Do not use the cooking function without water in the tank.
- Never use a microwave oven to heat the mixing cup and any parts of the product.
- Do not block the hole for the entry of water or the escape of steam
- Please ensure that when the product is working, water has been added to the mixing cup, and then the power is turned on.
- If the supply cord is damaged, it must be replaced by the manufacturer or its service agent or similarly qualified persons in order to avoid a hazard.
- Before connecting the product to the power supply, check that the voltage marked on the product matches the local supply voltage.
- The power plug of the product must be plugged into a grounded outlet and it must be ensured that it is securely inserted.
- The product will reach a high temperature during cooking, touching may cause burns.
- When opening the mixing cup lid during cooking, be careful of the high temperature steam that is emitted.
- Watch out the high temperature steam when getting off the mixing cup after finish cooking.
- Check the temperature of the food before feeding.
- Switch off the appliance and disconnect from supply before changing accessories or approaching parts that move in use.
- If the blade is stuck, unplug the plug and remove the material that blocks the blade.
- When cleaning the mixing blade, carefully remove the mixing blade to avoid hurting by the blade.
- If the mixing blade is damaged, do not use the product.

Precautions for Use

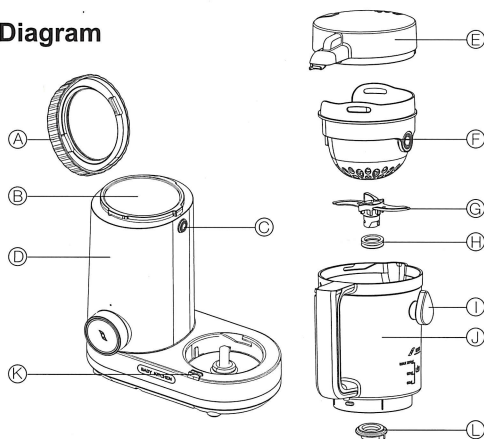
- Pull out the power plug and clean the unit after cooling.
- Please use pure water in the water tank to avoid scale.
- Please ensure that the product has a continuous mixing time of no more than 30 seconds.
- Food heating time should not be too long to avoid destroying food nutrition.
- Do not pack the food basket too full when cooking food.
- When mixing liquid raw materials, the raw materials should not exceed 250 ml of the maximum scale marked on the mixing cup. Wait for 30 minutes between every two time usage.
- Remember to check the finess of the baby's food to ensure that there are no clots in the food.
- When cooking fruits and vegetables with color, the food basket and the mixing cup may be colored due to food pigmentation; therefore, after using the product, please wash it immediately; even if it is dyed, please feel free to use it.
- Place the product on a stable, level and flat surface.
Make sure there is enough space around it to prevent damage to the cabinet or other objects caused by high temperature steam during use.
- Appliances can be used by persons with reduced physical, sensory or mental capabilities or lack of experience and knowledge if they have been given supervision or instruction concerning use of the appliance in a safe way and understand the hazards involved.
- Children shall not play with the appliance.
- The product can only be used indoors.



Safety System

- This product has an overheat protection function.
- If two steaming processes are too short, the product may overheat.
- If overheat protection is enabled during re-steaming, cool the product for 30 minutes. Then the product can be reused.
- The main body of the product is designed with a safety lock. This product will only work if you have properly assembled all the components in place.

Component Diagram



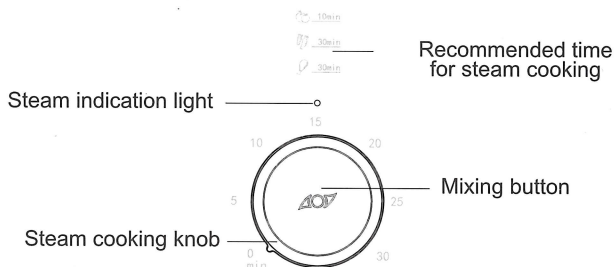
Please check the quantity of the contents before using. If there are any missing parts, please contact the shopkeeper.

No.	Name	Material	Material No.	Temperature Range	Quantity	Note
Ⓐ	Tank cap	ABS	/	-20℃~120℃	1	/
Ⓑ	Water Tank	PP	/	-20℃~120℃	1	Food contact
Ⓒ	Steam seal	Silicon	3	-20℃~200℃	1	Food contact
Ⓓ	Main body	PP	29	-20℃~120℃	1	/
Ⓔ	Mixing cup cap	PP	29	-20℃~120℃	1	Food contact
Ⓕ	Food basket	SUS304	/	-20℃~800℃	1	Food contact
Ⓖ	Blade	PA66	48	-20℃~160℃	1	Food contact
Ⓗ	Blade base gasket	Silicon	3	-20℃~200℃	2	Food contact
Ⓘ	Food basket reverse knob	PP	/	-20℃~120℃	2	/
Ⓙ	Mixing cup	Tritan	35	-20℃~100℃	1	Food contact
Ⓚ	Safety switch	PA66	/	-20℃~160℃	1	/
Ⓛ	Block blade	PA66	/	-20℃~160℃	1	/
Instructions					1	

* Pictures of the products in this instruction are for reference only. Please refer to the actual contents.

* Do not boil the heating cup, and clean it with water or sterilize it with steam.

Panel description



Mixing button

Long press the button to mix the food, the process stops as soon as you release the button. Time of each continuous mixing must not exceed 30 seconds.

Steam cooking knob

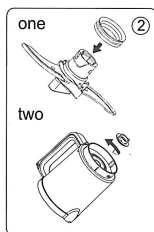
Set the steam cooking time by turning the knob clockwise (time interval to be set between 0 to 30 minutes), when the processing starts, the indicator light turns on. During cooking, the knob returns over time to the starting point (starting point at 0 min). After cooking (when the knob returns to the starting point), the product makes a "ding" type noise, and then the indication light switches off.

Methods of use: steaming & mixing



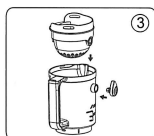
- Before using, clean the various components except the main body, check if the steam outlet gasket is clogged.
- Open the cap, pour 200ml of pure water, close the cap (image 1).

1. Make sure that the water level does not exceed 200ml. Water level indication is located on the mixing bowl.
2. It is recommended to use purified water to avoid limescale formation.
3. Only water is introduced into the water tank.
4. At the end of each use, empty the water tank after the engine cools down.



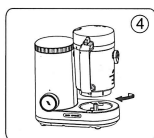
- Match the blade gasket with the blade base following the arrow shown in the image, hold the plastic handle of the blade base with your left hand, hold the blade base with your right hand. Pair with the mixing bowl following the direction of the arrow. (Image 2)

1. The blade is very sharp. Pay attention.
2. Do not forget to install the gasket, it could cause leakage.



- Install the basket in the mixing bowl, co-indicate the basket nozzle and the mixing bowl, install the basket upside down knob (part pointing upwards), introduce the solid food cut 1.5 cm into the basket, close the cup with the cap. Hear " Click " (image 3)

1. Large quantities of solid foods require multiple processes.
2. Do not steam cook for frozen food, in this case the product cannot overheat the food to the required temperature. Before using, defrost the food, remove any residual water, and then introduce it into the mixing bowl.



- Match the cup and the base by turning it clockwise (you hear " Click ") (image 4).

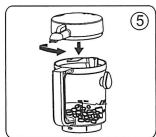
1. If the position of the mixing bowl does not match with the safety switch, the product will not work.

- Plug in the power plug, set the steaming time by turning the knob clockwise, (time interval to be set between 0 to 30 minutes), when the process starts, the indicator light comes on. During cooking, the knob returns over time to the starting point (starting point at 0 min). After cooking (ie when the knob returns to the starting point), the product makes a "ding" type noise, and then the indication light switches off.

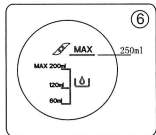
1. During steam cooking, high temperature vapors come out of the mixing cup rod, to avoid burns, do not touch (especially for children) the high temperature or steam components.

- If it is necessary to mix the food after steaming, it is not necessary to open the cap, just turn the basket upside down knob to pour the food from the basket into the mixing bowl. (Pointed part of the knob downwards)
 - Long press the button to mix the food, the process stops as soon as you release the button. Time of each continuous mixing must not exceed 30 seconds.
1. Before giving the baby prepared food, remember to check the temperature and texture of the baby's food to make sure there are no lumps in the food.

Methods of use: mixing only, without steaming



- Introduce the food cut into pieces of about 1.5 cm into the mixing bowl (without basket), introduce liquid according to the need, close the cap by turning it counterclockwise (you hear " Click ") (image 5)



- Do not exceed the volume limit when mixing. (250ml) (image 6)

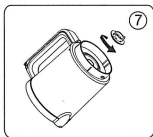
- Match the mixing bowl with the base by turning clockwise following the instructions. (You hear " Click ")
1. If the position of the mixing bowl does not match with the safety switch, the product will not work.
- Plug in the power plug, long press the button to mix the food, the process stops as soon as you release the button. Time of each continuous mixing must not exceed 30 seconds.
 - Once the mixing is finished, unplug the power plug, take the mixing bowl and pour the food onto the plate.
1. Before giving the baby prepared food, remember to check the temperature and texture of the baby's food to make sure there are no lumps in the food.

Cleaning and Maintenance

- Clean up before and after use it, keep tidy.
- Other removable parts except main engine can be washed by water.

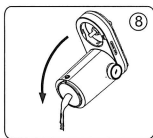
- Don't use bleach or chemical solvent or tablet in this product.
- Don't use steel wool, abrasive cleaner or corrosive liquid (such as gasoline, acetone and alcohol) to wash this machine.
- Main engine(electric part): forbid to immerse into water, just use wet cloth to wipe.
- To avoid more scale in steam water box, please use purified water.If there is any scale, please dip in scale cleaner, clean it after scale peel off.If it is intractable scale, use clean stick to clean it.Clean up scale once every other month to ensure 100% work efficiency.Please keep the heating base and bottom clean.If there is dirt, wipe it with a wet towel instead of a steel brush.

Method:



- Follow the direction of the arrow: hold the plastic handle of the blades with your left hand, hold the base of the blades with your right hand, remove the component following the direction of the arrow. (Image 7)

1. The blade is very sharp. Pay attention
2. Do not forget to install the gasket, it could cause leakage.



- Once the steaming is finished, the tank may contain residual water, in this case, empty the tank to avoid the formation of bacteria. (Image 8)

Specification

Item: Baby Food Processor	Model: F9005	Rated frequency: 50Hz
Rated voltage: 220-240V~	Blending power: 60W	Heating power :300W
Food capacity :70g~150g	Water tank capacity:200ml	Made in China
Recommended use condition: Indoor use only .Room temperature 15~30℃, Humidity 50%~80%		

Warranty card

Thank you for purchasing our products. In order to protect your rights please keep your warranty card properly, if you have quality problems, please contact the distributors.

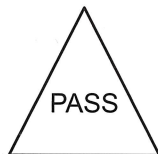
Name		Tel.	
Item Name		Model No.	
Purchase Date			
Address			

Notice

- With Normal use from the date of purchase , completed machine has one year of free maintenance services(UV lamp tube, shelf, the shell of product are not under warranty).
- Other consumable parts are not under warranty.
- Please present the warranty card and purchase voucher or invoice for maintenance.

No-Warranty coverage

- The damage caused by inadvertent or error use.
- Warranty card is lost or damaged
- Damage caused by natural disasters and other irresistible factors.



Thank you for using our product, we are committed to offer you better quality, much more considerate service and favorable prices to consumers.

www.boboduck.com

... if neve, yletsibemmi h
... entry of water or the en
... ashua fall h... at al